

Tray capacity & flask positioning

The TU18 universal tray uses springs to hold flasks, bottles and other vessels. The spring positions can be adjusted to give flexibility and maximise tray capacity. The universal tray is supplied preassembled with 14 springs (6 long and 8 short) held using six securing rods.

The following table and diagrams show the tray capacity and the associated spring and flask positions.

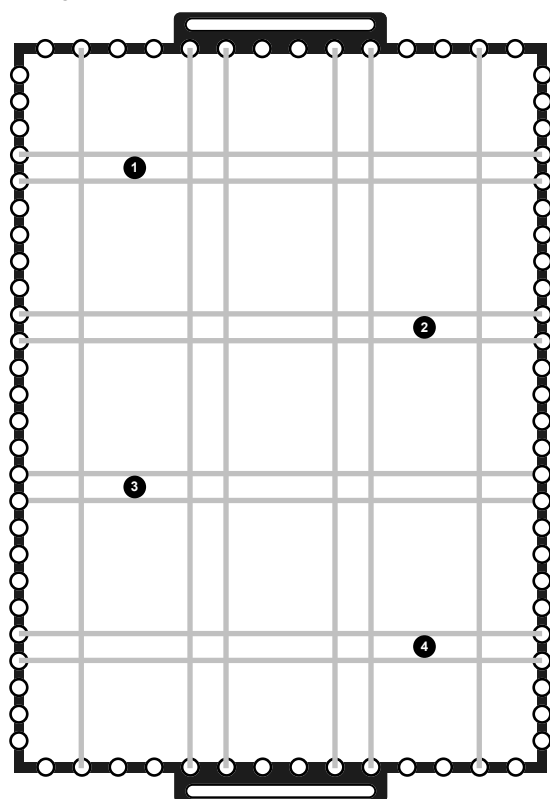
TU18	25ml	50ml	100ml	250ml	500ml	1000ml
Flask capacity (no lid)	44	35	18	11	7	4
Flask capacity (with lid)	44	35	18	11	5	0
Springs required	25*	22*	20*	14	14	14

* Additional springs can be purchased from Grant using product code SSK.

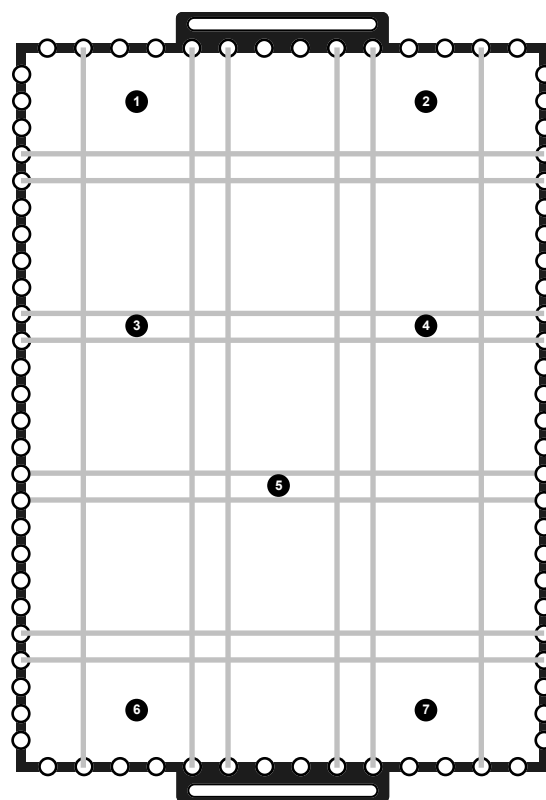
Adjusting the spring positions

1. Slide out one of the securing rods and carefully release the tension in the springs.
2. Remove opposite securing rod with springs attached.
3. Thread springs through the required holes along the side of the tray (use lower holes along the tray sides for the 25ml flasks and upper holes for all other sizes).
4. Pull springs tight and thread through holes on the opposite side of the tray. Secure onto another rod using the spring eyelets.

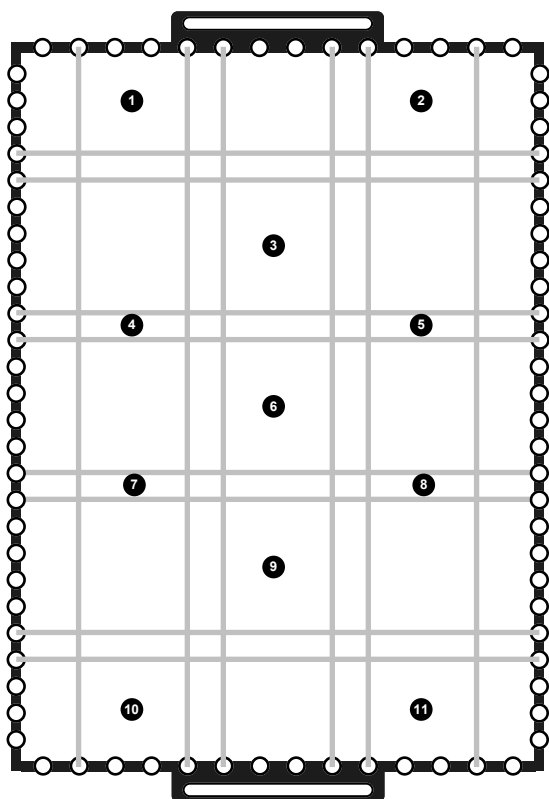
For best performance spring positions should be adjusted to ensure that vessels are held securely in the direction of shaking.



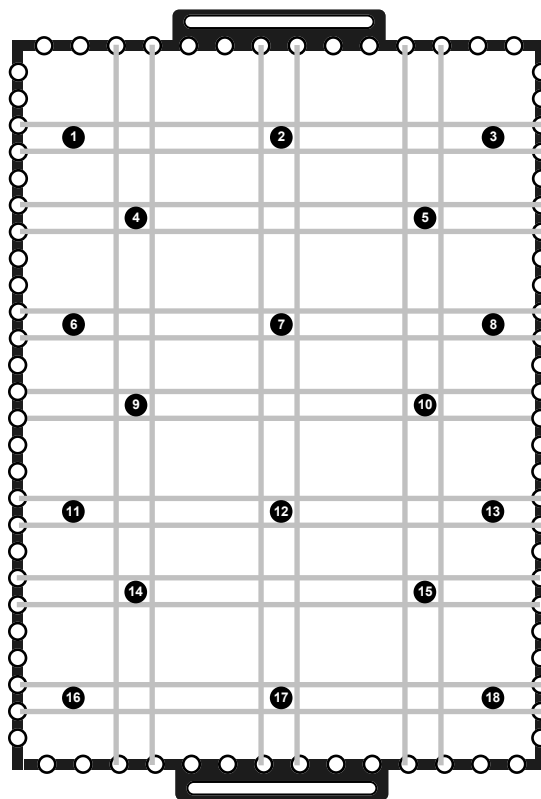
4 x 1000ml flasks
14 springs required (6 long & 8 short)



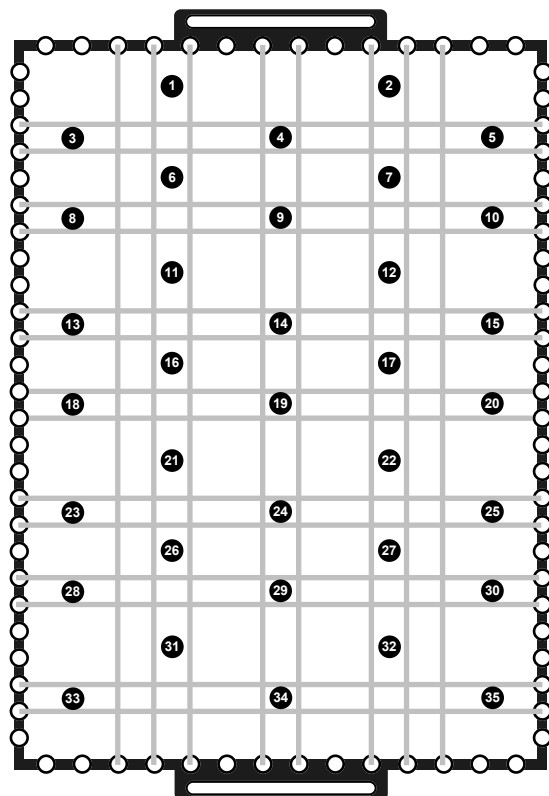
7 x 500ml flasks (no lid configuration shown)
14 springs required (6 long & 8 short)



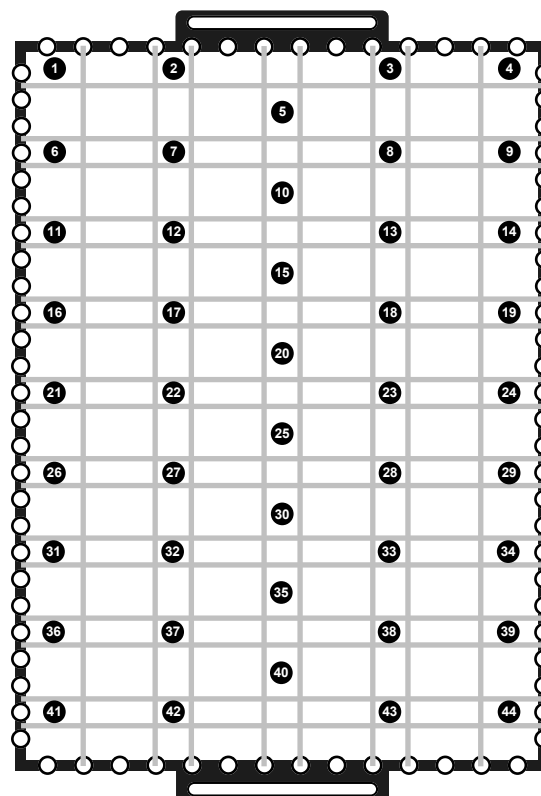
11 x 250ml flasks
14 springs required (6 long & 8 short)



18 x 100ml flasks
20 springs required (6 long & 14 short)



35 x 50ml flasks
22 springs required (8 long & 14 short)



44 x 25ml flasks
25 springs required (8 long & 17 short)
Use lower holes on tray sides

Tray capacity & flask positioning

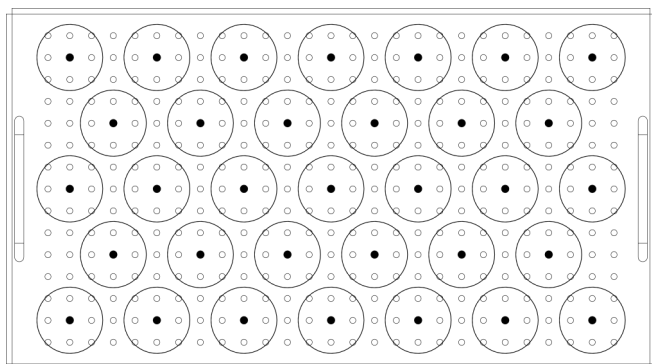
The TF18 flask tray contains threaded holes to hold 25ml, 50ml, 100ml, 250ml, 500ml and 1000ml flask clamps.

The following table and diagrams show the tray capacity and optimal clamp positions.

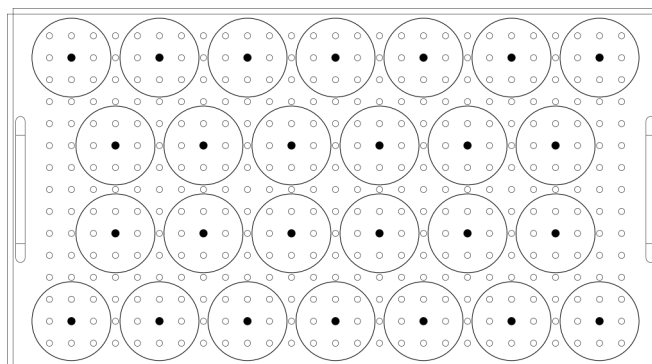
TF18	25ml	50ml	100ml	250ml	500ml	1000ml
Flask capacity	33	26	17	14	6	4

Attaching the clamps to the flask tray

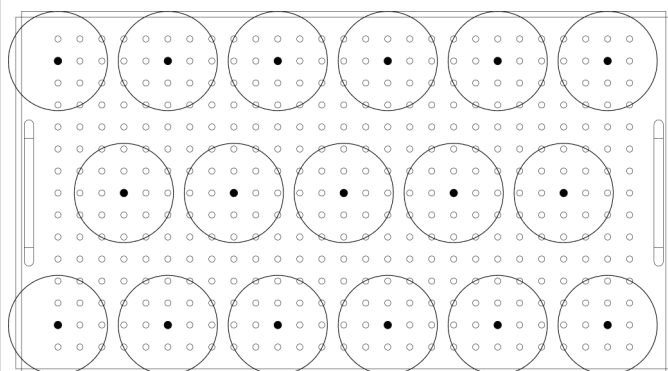
- M4 fixings are supplied with all flask clamps:
 - 25ml, 50ml & 100ml clamps have one fixing
 - 250ml, 500ml and 1000ml clamps have four fixings
- Secure the flask clamps onto the tray using a suitable screwdriver



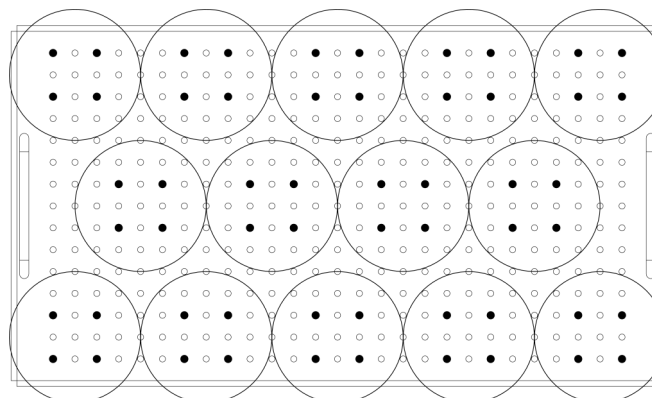
25ml



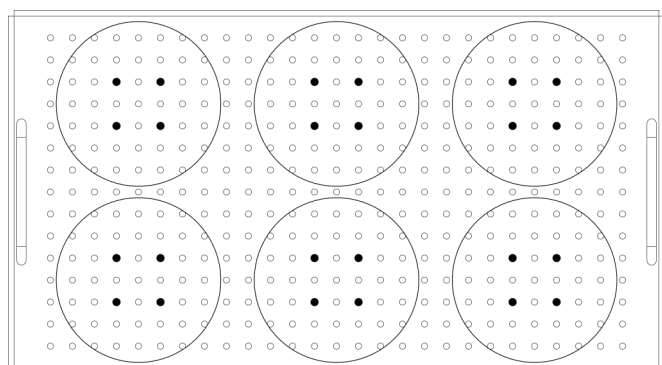
50ml



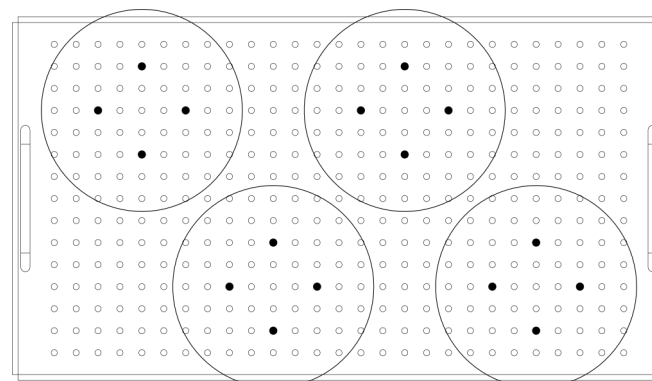
100ml



250ml



500ml



1000ml