

#### Tray capacity & flask positioning

The TU12 universal tray uses springs to hold flasks, bottles and other vessels. The spring positions can be adjusted to give flexibility and maximise tray capacity. The universal tray is supplied preassembled with 12 springs held using four securing rods.

The following table and diagrams show the tray capacity and the associated spring and flask positions.

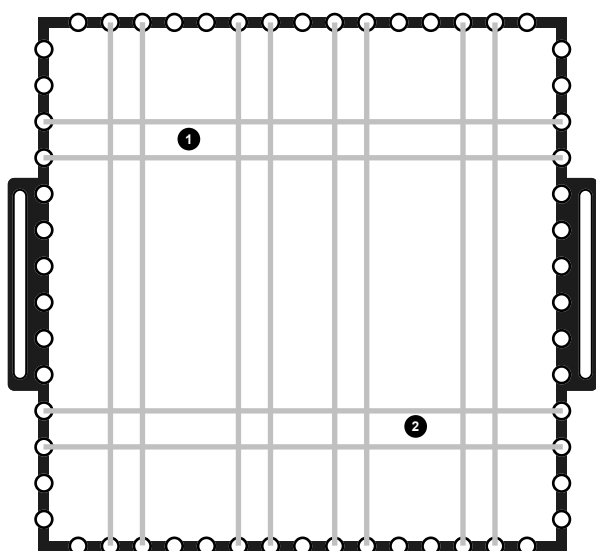
TU12	25ml	50ml	100ml	250ml	500ml	1000ml
Flask capacity (no lid)	24	18	10	6	4	2
Flask capacity (with lid)	24	18	10	6	4	0
Springs required	18*	16*	14*	12	12	12

\* Additional springs can be purchased from Grant using product code SSK.

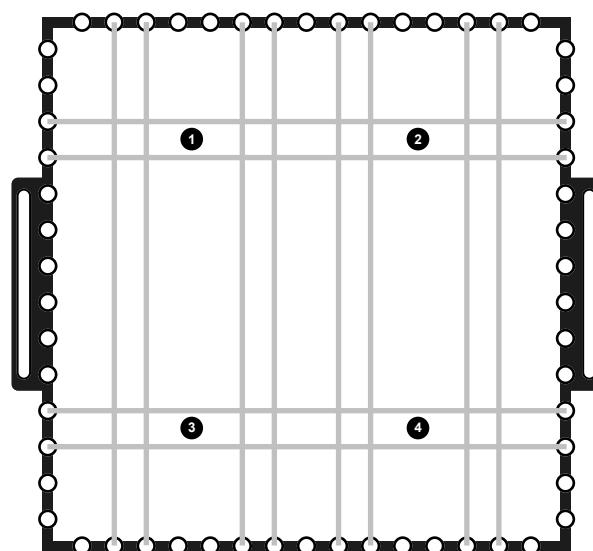
#### Adjusting the spring positions

1. Slide out one of the securing rods and carefully release the tension in the springs.
2. Remove opposite securing rod with springs attached.
3. Thread springs through the required holes along the side of the tray (use lower holes along the tray sides for the 25ml flasks and upper holes for all other sizes).
4. Pull springs tight and thread through holes on the opposite side of the tray. Secure onto another rod using the spring eyelets.

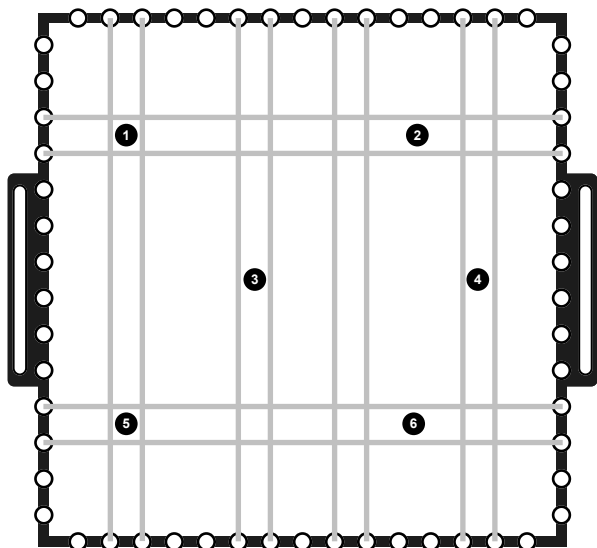
For best performance spring positions should be adjusted to ensure that vessels are held securely in the direction of shaking.



2 x 1000ml flasks  
12 springs required

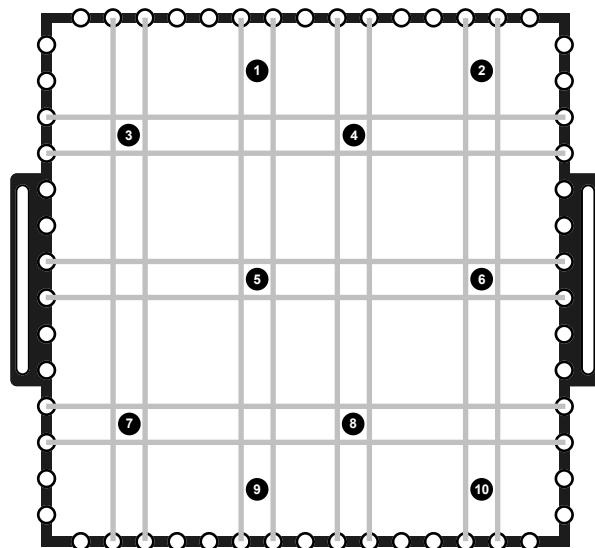


4 x 500ml flasks  
12 springs required



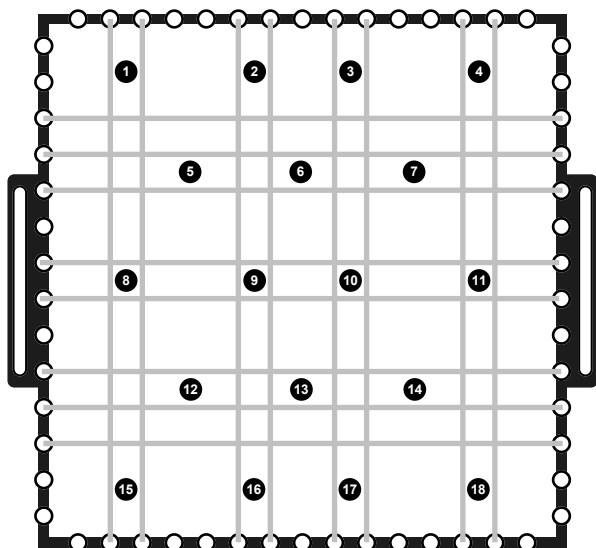
6 x 250ml flasks

12 springs required



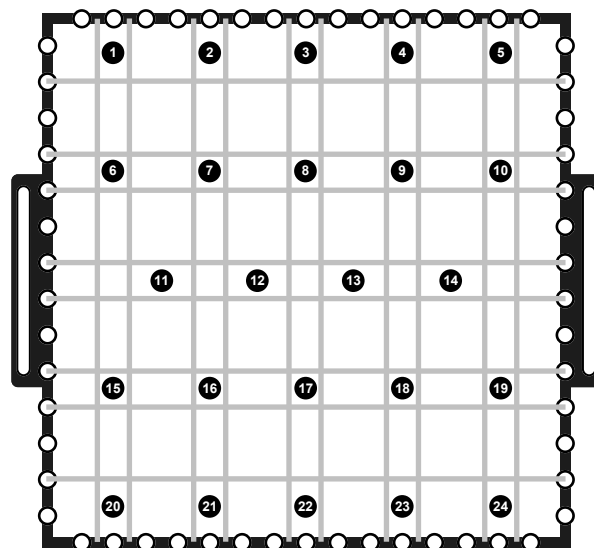
10 x 100ml flasks

14 springs required



18 x 50ml flasks

16 springs required



24 x 25ml flasks

18 springs required  
Use lower holes on tray sides

#### Tray capacity & flask positioning

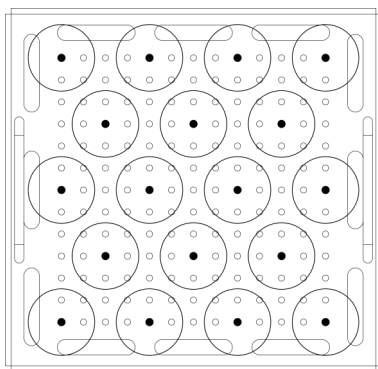
The TF12 flask tray contains threaded holes to hold 25ml, 50ml, 100ml, 250ml, 500ml and 1000ml flask clamps.

The following table and diagrams show the tray capacity and optimal clamp positions.

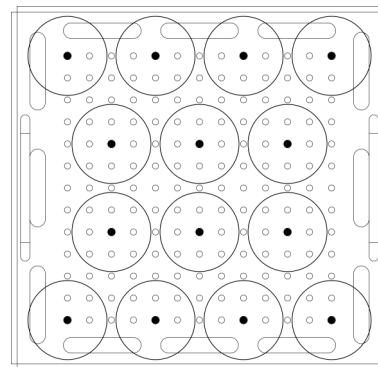
TF12	25ml	50ml	100ml	250ml	500ml	1000ml
Flask capacity	18	14	9	5	4	2

#### Attaching the clamps to the flask tray

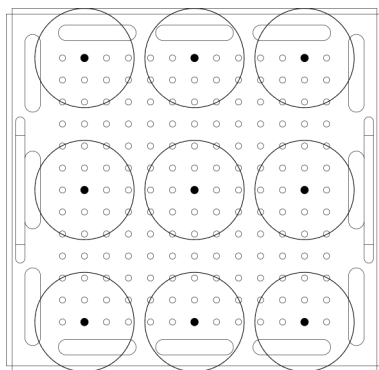
- M4 fixings are supplied with all flask clamps:
  - 25ml, 50ml & 100ml clamps have one fixing
  - 250ml, 500ml and 1000ml clamps have four fixings
- Secure the flask clamps onto the tray using a suitable screwdriver



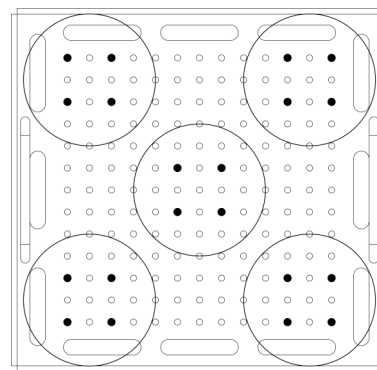
25ml



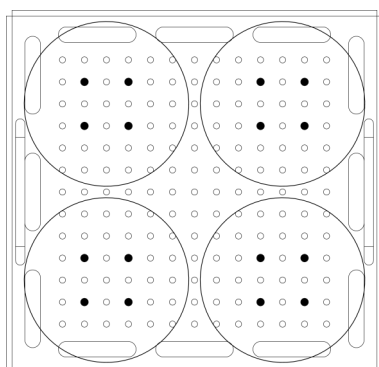
50ml



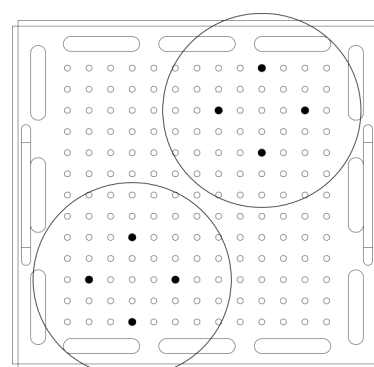
100ml



250ml



500ml



1000ml