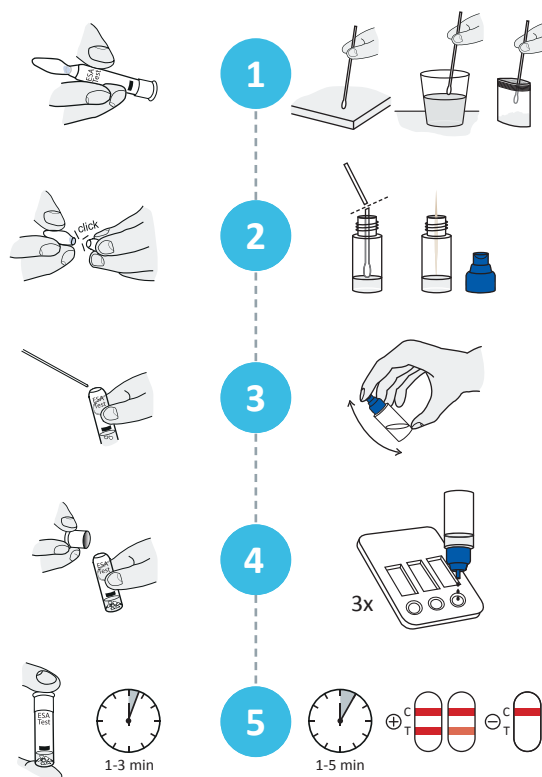


ESA and Tracedetect Substance Tests

	ESA Test	Tracedetect
Test principle	Chemical	Immunological
Evaluation	Colour change	Line formation
Sensitivity	0.5 mg (LSD 10-20 µg GHB 0.02 mL)	0.2-8 µg
Specificity	Broad: Detection of chemically reactive groups	Narrow: Detection of molecular structures
Test procedure	Single step: Add substance	Two steps: Dissolve substance in solution, add solution to test
Test time	1-3 minutes	1-5 minutes
Storage	0-40 °C	2-30 °C
Working temp.	10-40 °C	2-40 °C
Area of application	Substances	Surfaces
	Screening	Initial confirmation
Your benefits at a glance	<ul style="list-style-type: none"> ✓ Easy and safe single-step assay ✓ Fast results in just one minute ✓ Clear colour signal for easy interpretation ✓ Broad range of products available 	<ul style="list-style-type: none"> ✓ Pocket-sized format ✓ Detects residues on surfaces ✓ Easy to use ✓ Supplied with sample collectors for all sample collection methods and incubation bag for harsh weather conditions

ESA Test | Tracedetect



Rev04.01/XX0742en000001
Rev04.01/EN42en000001

nal von minden

We help you care!

- ✓ Quality – DIN EN ISO 9001 and DIN EN ISO 13485
- ✓ Consultation and service – we are at your side all over the world!
- ✓ Fast and reliable logistics – tracked delivery of in-stock goods within 1-3 working days

Narcotic Field Tests

– On the drug trail



- Rapid Tests
- Laboratory Diagnostics
- Laboratory Service
- Consulting & Service

Substance testing with nal von minden ...you can count on us!

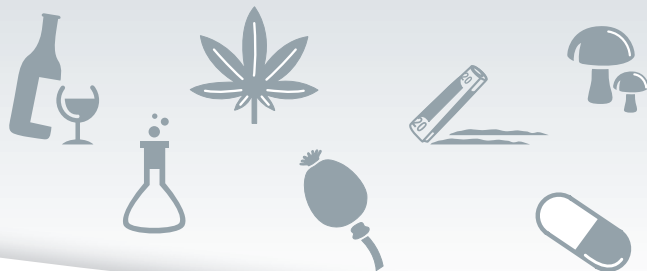
Officials often encounter suspicious substances, the composition of which is unknown. For this reason we offer ESA substance tests and the nal von minden Tracedetect® product line. Both test methods work hand in hand, are safe and easy to use and offer fast and reliable results.

The ESA substance tests are user-friendly, one-step tests based on **chemical detection** methods. They are able to detect a **broad range** of intoxicants in unknown substances, such as powders, tablets and liquids, within minutes.

ESA Test GmbH has long been known for its ampoule tests, which enable the detection and identification of drugs. Made in Germany to the highest quality standards, we deliver consistent and reliable products and services.

The nal von minden Tracedetect® range offers a well-designed test system in a compact, pocket-sized format. It is based on an **immunological testing** method known for its **highly sensitive** and **targeted** detection of near-invisible drug traces on a variety of surfaces.

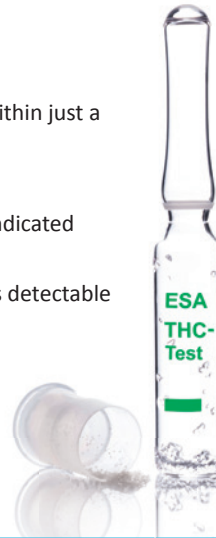
Application	ESA	Tracedetect	LC-MS/ GC-MS
Screening	X		
Initial confirmation		X	
Confirmation			X



ESA Substance Tests – show your colours

Your benefits at a glance:

- ✓ Practical single-step tests
- ✓ Fast and reliable results within just a few minutes
- ✓ Easy test interpretation
- ✓ Substance identification indicated by clear colour change
- ✓ Broad range of substances detectable



Product	Product Code
Ampoule Tests	
ESA Opiates/Amphetamines tests	311100
ESA Cocaine tests	311110
ESA LSD tests	311120
ESA Cannabis tests	311130
ESA THC/CBD tests	311131
ESA Ecstasy/Methamphetamine tests	311140
ESA GHB tests	311150
ESA Heroin tests	311170
ESA Methadone/Ketamine tests	311180
ESA Buprenorphine tests	311220
ESA Ephedrine tests	311240
ESA GBL tests	311250
ESA General Screening tests	311331
ESA Synthetic Cathinones tests	311470
Substance Wipe	
ESA Cocaine Sweep	311270

Tracedetect Substance Tests – visualise narcotics

Your benefits at a glance:

- ✓ Highly specific: Reliable substance identification for positive ESA tests
- ✓ Highly sensitive: Even the detection of invisible traces is possible
- ✓ Well-designed test system in a compact, pocket-sized format
- ✓ Safe and easy to use
- ✓ Fast and reliable results in just one minute

Product	Product Code
Tracedetect Multi 5TAK substance test Detectable parameters: AMP, COC, MET, MOR/OPI, THC	144352N-10
Tracedetect Multi 5TAC substance test Nachweisbare Parameter: AMP, COC, MDMA, MET, MOR/OPI	144254N-10
Tracedetect Multi 4TD substance test Detectable parameters: ABP, SPC, THC, UR-144	144243N-10
Tracedetect Multi 2TI substance test Detectable parameters: FYL, MOR/OPI	144027N-10
Tracedetect Khat substance test Detectable parameters: CAT	144097N-10

