



## nal von minden Drug-Screen® Cup II (Key Cup)

**Simple, reliable and always one step ahead**

### The cup test for any situation

Drug screening has never been so easy or flexible as with our Cup II tests. The cup boasts two separate chambers, meaning sampling and testing need not be carried out at the same place or time. The use of a turn key allows you to start the test at a time and place that suits you. Furthermore, thanks to a new version of the test equipped with two test cartridges, up to 20 parameters can now be tested simultaneously. It is also hygienic and secure, allowing for safe transportation to a laboratory for confirmation analysis.

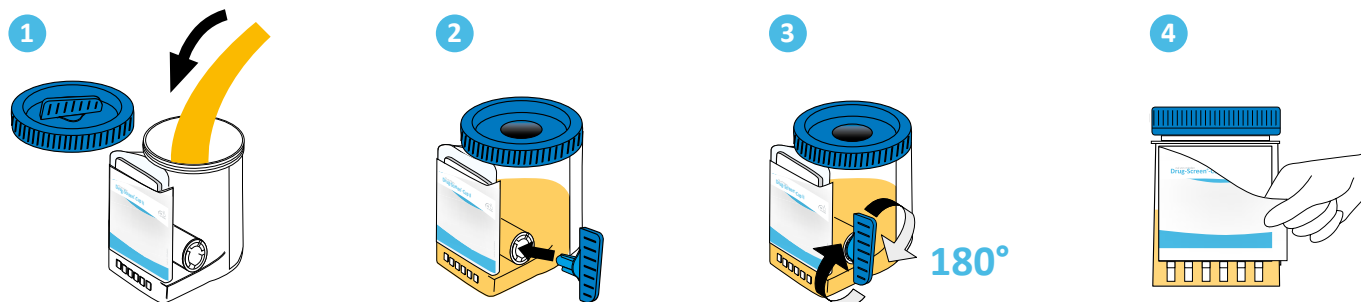
### Digital evaluation

With our Rapid Slide Scanner (RSS) system, also available as a mobile version, you can evaluate almost any nal von minden rapid test – including the Cup II. Clearly structured software offers not only clear, automated analyses, but also personalised result documentation. Thanks to automatic test recognition, the test can be read regardless of its position or form. Our new, mobile RSS flash device enables effortless result interpretation anytime, anywhere and regardless of lighting conditions.

### Benefits of using key cups:

- ✓ High specificity and sensitivity
- ✓ Easy to use
- ✓ Separate sample and test chambers
- ✓ Turn-key guarantees flexibility, enabling sample collection and testing to be carried out at different times and locations
- ✓ Suitable for evaluation using the RSS II, III and flash (connection to LIMS possible)
- ✓ Two-sided version available, enabling almost any parameter combination

## Test procedure



## Result interpretation



A detailed description can be found in the package insert.

Here is a short excerpt taken from our Cup II portfolio. Haven't found your preferred combination? We have many more. Don't hesitate to get in touch with us!

Product code**	Product*	Parameter
910030	Drug-Screen Cup II 3A-AC-C	EtG500, MET1000, THC50; pH/CREA/SG
910040	Drug-Screen Cup II 4A	AMP1000, COC300, MOR/OPI300, THC50
910050	Drug-Screen Cup II 5A	AMP1000, BZD300, COC300, MOR/OPI300, THC50
910060	Drug-Screen Cup II 6A	AMP1000, BZD300, COC300, MOR/OPI300, MTD300, THC50
910070	Drug-Screen Cup II 7A	AMP1000, BZD300, COC300, MET1000, MOR/OPI300, MTD300, THC50
910080	Drug-Screen Cup II 8A	AMP1000, BUP10, BZD300, COC300, MOR/OPI300, MTD300, TCA1000, THC50
910091	Drug-Screen Cup II 9B	AMP500, BUP10, COC300, MDMA500, MET500, MOR/OPI300, MTD300, THC50; pH/CREA
910101	Drug-Screen Cup II 10B	AMP1000, BAR300, BZD300, COC300, MDMA500, MET1000, MOR/OPI300, MTD300, TCA1000, THC50
910110	Drug-Screen Cup II 11	AMP1000, BAR200, BZD200, COC300, MDMA500, MOR/OPI300, MTD300, PCP25, TCA1000, THC50, CREA
910120	Drug-Screen Cup II 12A	AMP1000, BAR200, BUP10, BZD200, COC300, MDMA500, MET300, MOR/OPI300, MTD250, PCP25, THC25, TML100; CREA/OXI
910140	Drug-Screen Cup II 14A	AMP1000, BUP10, BZD300, COC300, FYL10, MDMA500, MET1000, MTD300, MPD150, MOR/OPI2000, SPC50, TCA1000, THC50, TML100
9120160	Drug-Screen Cup II 16A	AMP1000, BUP10, BZD300, COC300, EDDP100, FYL10, HRN/6-MAM10, MET1000, MDMA500, MOR/OPI300, MPD150, PGB500, TCA1000, THC50, TIL300, TML100

\*Sample material: Urine

\*\*25 cup tests per pack

## Evaluation system

Product code	Product	Product description
770061	Rapid Slide Scanner (RSS) III Cup	Evaluation system
770070	RSS flash Cup	Mobile evaluation device, USB cable, power cable, cup adapter, user manual, software download link

Our **customer service team** is on hand to answer any questions you may have by telephone, via email or in a personal consultation. For details on **your local sales office and regional free phone numbers**, visit [www.nal-vonminden.com](http://www.nal-vonminden.com).

We help you care!

Rapid Tests

Laboratory Diagnostics

Laboratory Service

Consulting & Service

Headquarters

nal von minden GmbH · Carl-Zeiss-Strasse 12 · 47445 Moers · Germany

Chief Executive Officers: Sandra von Minden · Roland Meißner · Thomas Zander

Commercial reg. Kleve · HRB 5679

Tel.: +49 941 290 10-0 · Fax: +49 941 290 10-50

info@nal-vonminden.com  
www.nal-vonminden.com